

Problem Gambling

in Connecticut

If you or someone you care about has a gambling problem, call the

PROBLEM GAMBLING HELPLINE

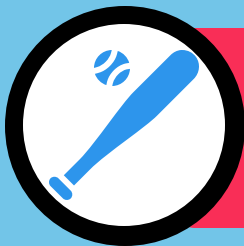
1-888-789-7777

Toll-free, Confidential, 24/7



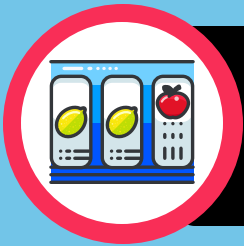
1.5%-2%

of the population will meet the clinical criteria for gambling disorder (as specified in Diagnostic & Statistical Manual of Mental Disorders - 5) within their lifetime



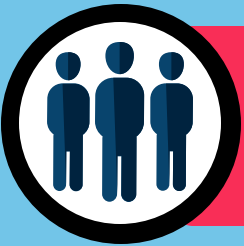
53,863 individuals

that's enough to fill Fenway Park 1.5 times or Yankee Stadium once with a few people left standing



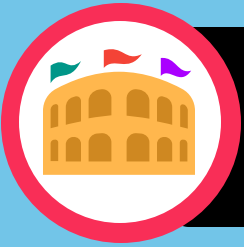
8%

of the population are considered "at-risk" of developing a problem with gambling in their lifetime



287,269

that's approximately 287,269 CT residents



28

...enough to attend 28 sold out concerts at Mohegan Sun Arena